

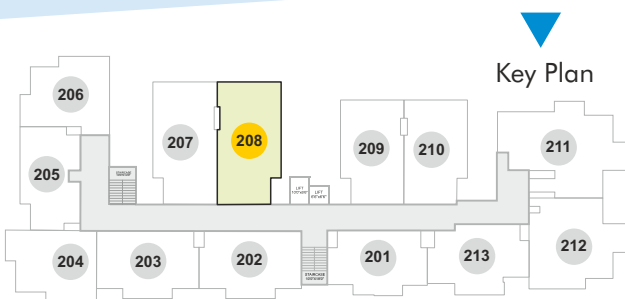
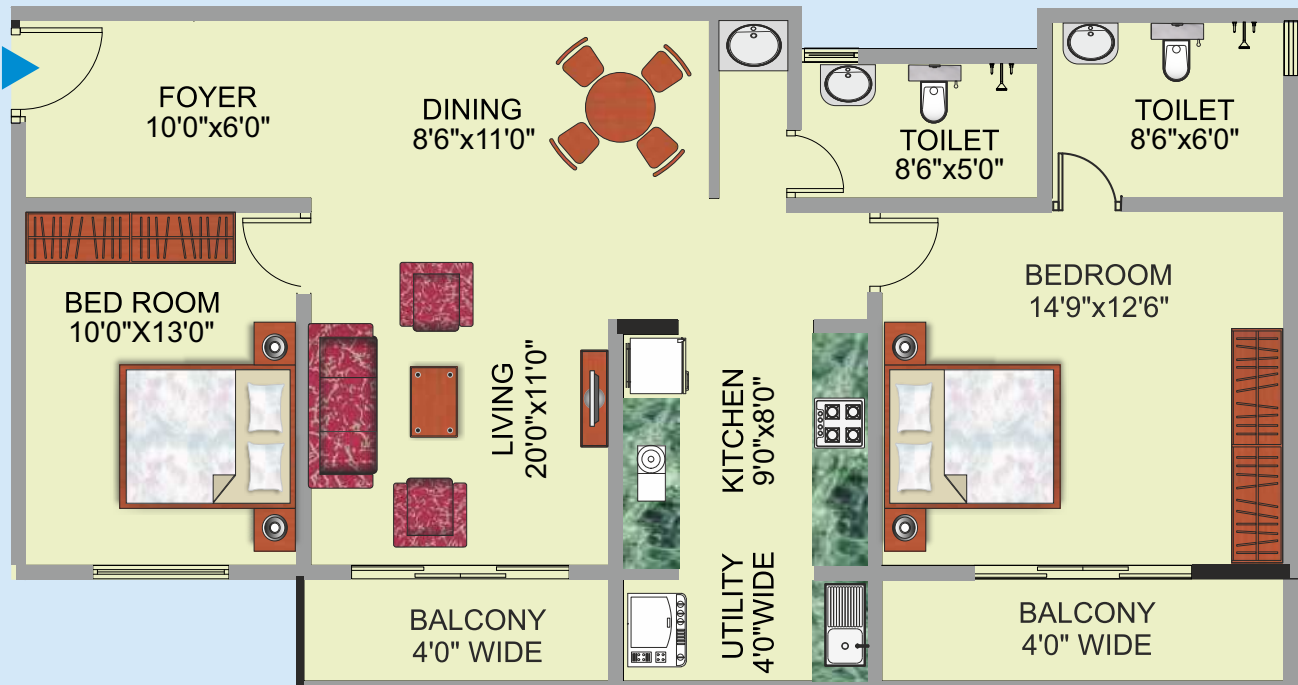
# Pratheek Prime

Kadabettu, Udipi



## Floor Plan

## Flat # 208



## Flat # 208

Super Built-up Area = 1355 sqft.

Carpet Area = 1017 sqft.

- 2 Bedrooms
- 2 Toilets
- Living Room
- Dining Room
- Kitchen with Utility Area
- 2 Balcony

## Amenities

- Spacious entrance lobby
- Two Nos passenger automatic elevators
- Two stairways for easy access and safety
- Open well with Municipal water connection
- 24 hrs power backup by diesel generator
- CCTV for security in common area
- Terrace covered with light roof
- Car parking in basement.



Project Promoted by

**Bharath**  
INFRA TECH