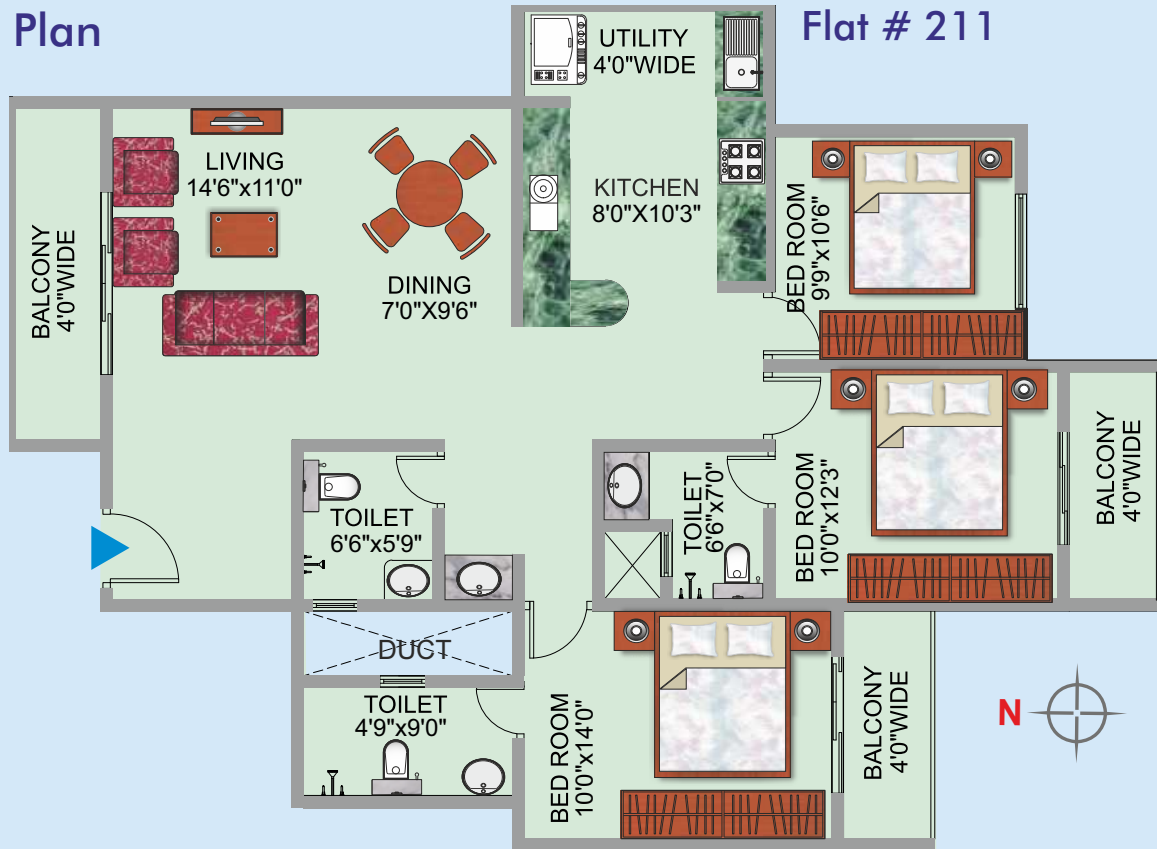


Pratheek Prime

Kadabettu, Udipi

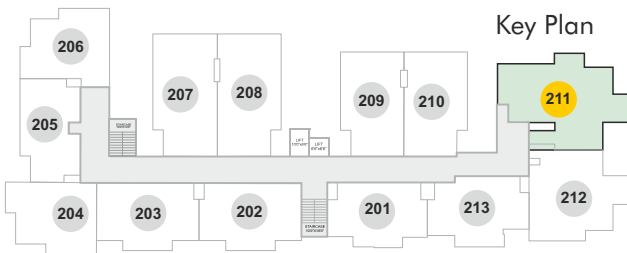


Floor Plan



Flat # 211

Key Plan



Flat # 211

Super Built-up Area = 1595 sqft.

Carpet Area = 1184 sqft.

- 3 Bedrooms
- 3 Toilets
- Living Room
- Dining Room
- Kitchen with Utility Area
- 3 Balcony

Amenities

- Spacious entrance lobby
- Two Nos passenger automatic elevators
- Two stairways for easy access and safety
- Open well with Municipal water connection
- 24 hrs power backup by diesel generator
- CCTV for security in common area
- Terrace covered with light roof
- Car parking in basement.



Project Promoted by

Bharath
INFRA TECH