

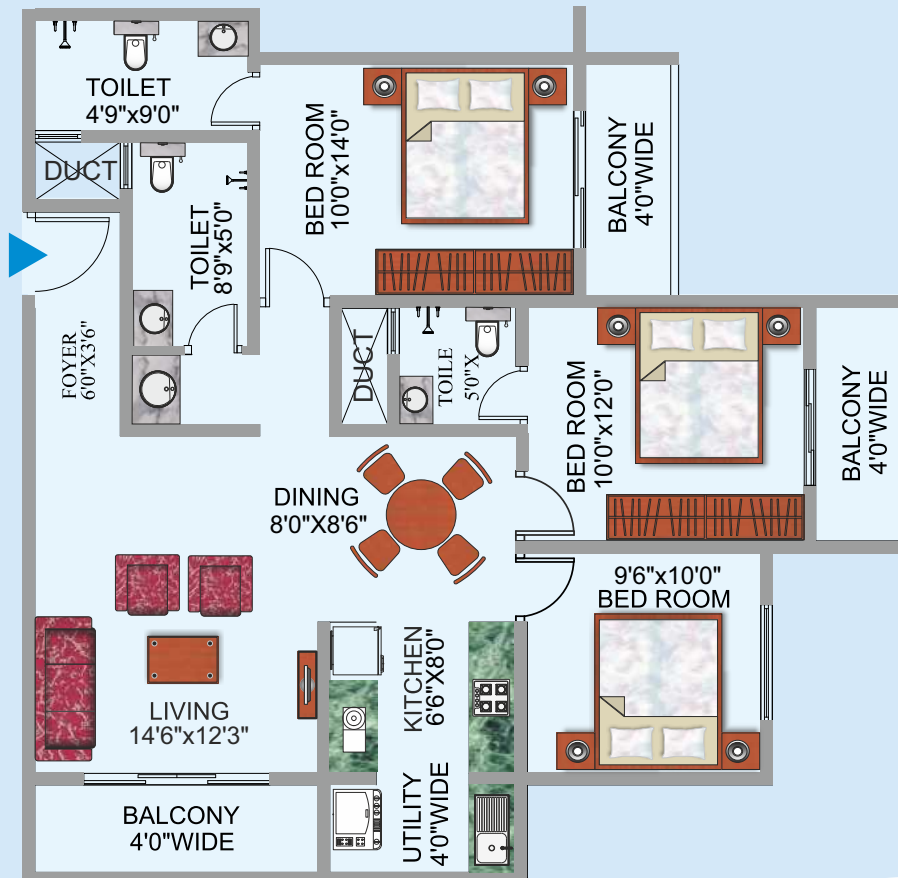
# Pratheek Prime

Kadabettu, Udipi

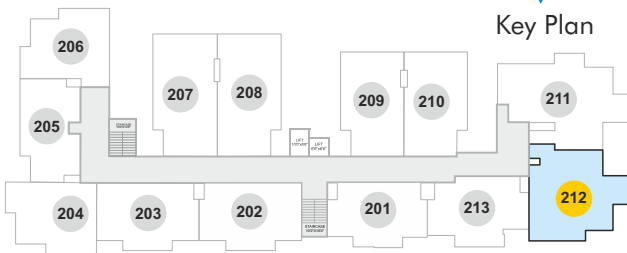


## Floor Plan

Flat # 212



## Key Plan



## Flat # 212

Super Built-up Area = 1345 sqft.

Carpet Area = 1016 sqft.

- 3 Bedrooms
- 3 Toilets
- Living Room
- Dining Room
- Kitchen with Utility Area
- 3 Balcony

## Amenities

- Spacious entrance lobby
- Two Nos passenger automatic elevators
- Two stairways for easy access and safety
- Open well with Municipal water connection
- 24 hrs power backup by diesel generator
- CCTV for security in common area
- Terrace covered with light roof
- Car parking in basement.



Project Promoted by

**Bharath**  
INFRA TECH