

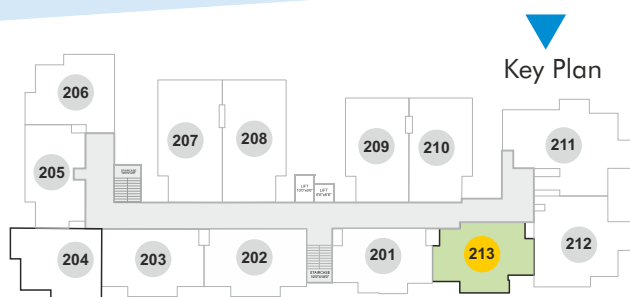
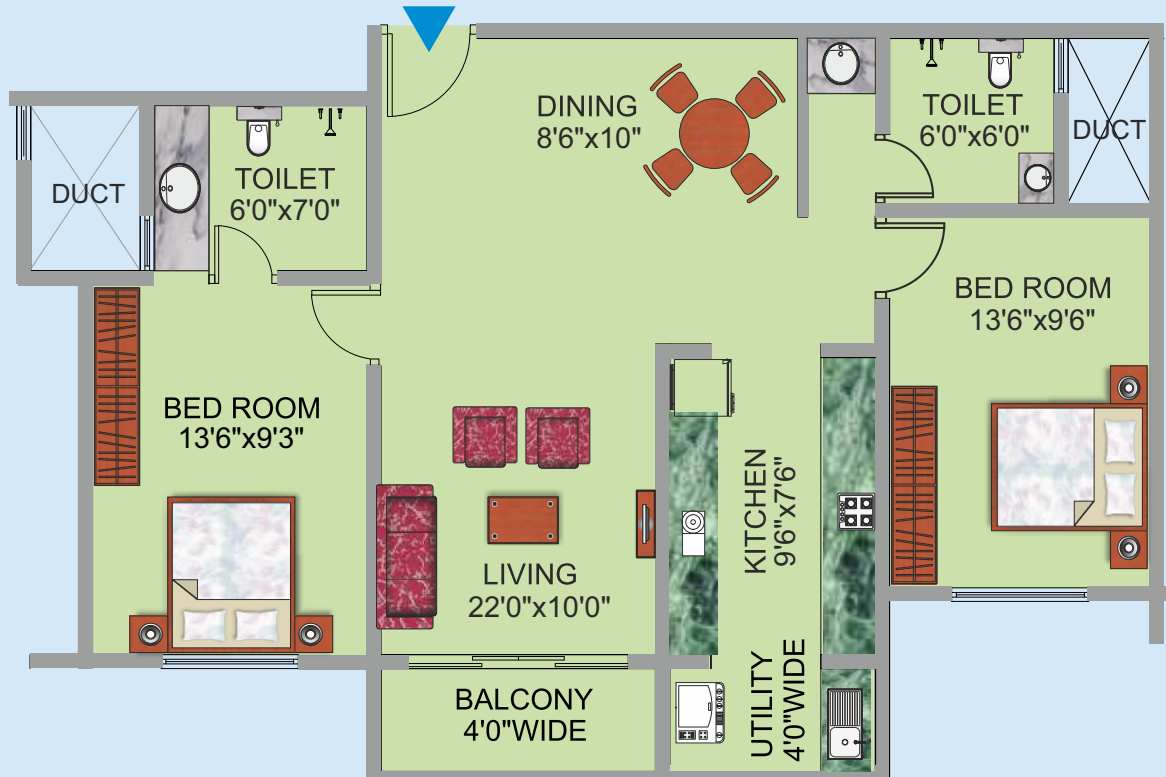
Pratheek Prime

Kadabettu, Udipi



Floor Plan

Flat # 213



Flat # 213

Super Built-up Area = 1100 sqft.

Carpet Area = 818 sqft.

- 2 Bedrooms
- 2 Toilets
- Living Room
- Dining Room
- Kitchen with Utility Area
- 1 Balcony

Amenities

- Spacious entrance lobby
- Two Nos passenger automatic elevators
- Two stairways for easy access and safety
- Open well with Municipal water connection
- 24 hrs power backup by diesel generator
- CCTV for security in common area
- Terrace covered with light roof
- Car parking in basement.



Project Promoted by

Bharath
INFRA TECH